



**Survey results of 59 boar stud managers
at BSMC IV**

Saint Louis, Missouri, August 9-10, 2012

By Tim Safranski, University of Missouri

SafranskiT@Missouri.edu

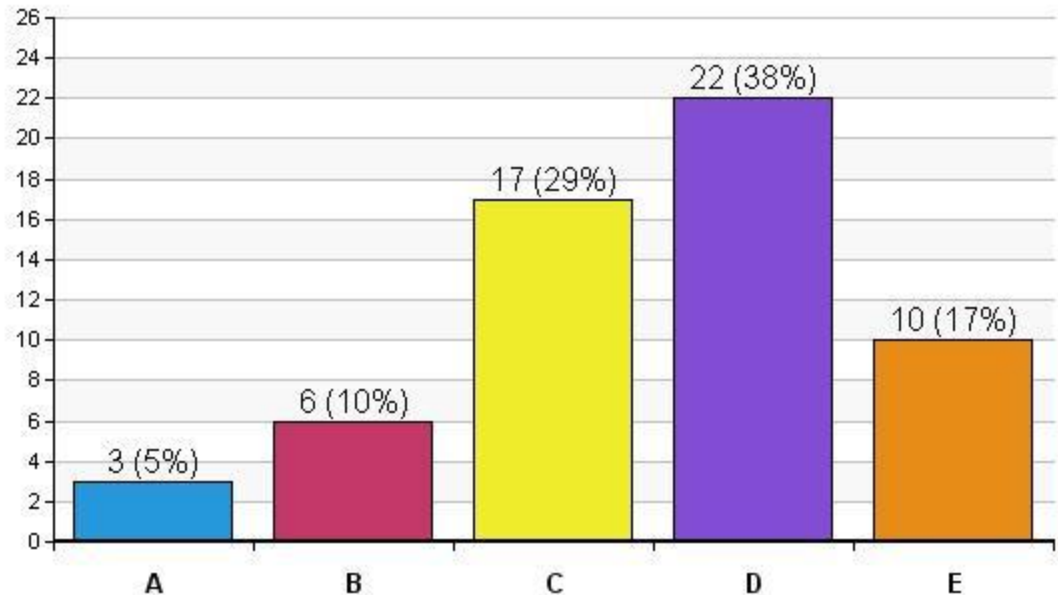
Overview

- Thirteen total sponsors
- Registrants from 20 U.S. states, Canada, Mexico, Brazil, The Netherlands, Spain, China, South Korea
- Conference held once every four years since 2000
- In 2012, 154 people registered and 59 took a 'clicker' as a stud manager; responses to multiple choice questions follow.

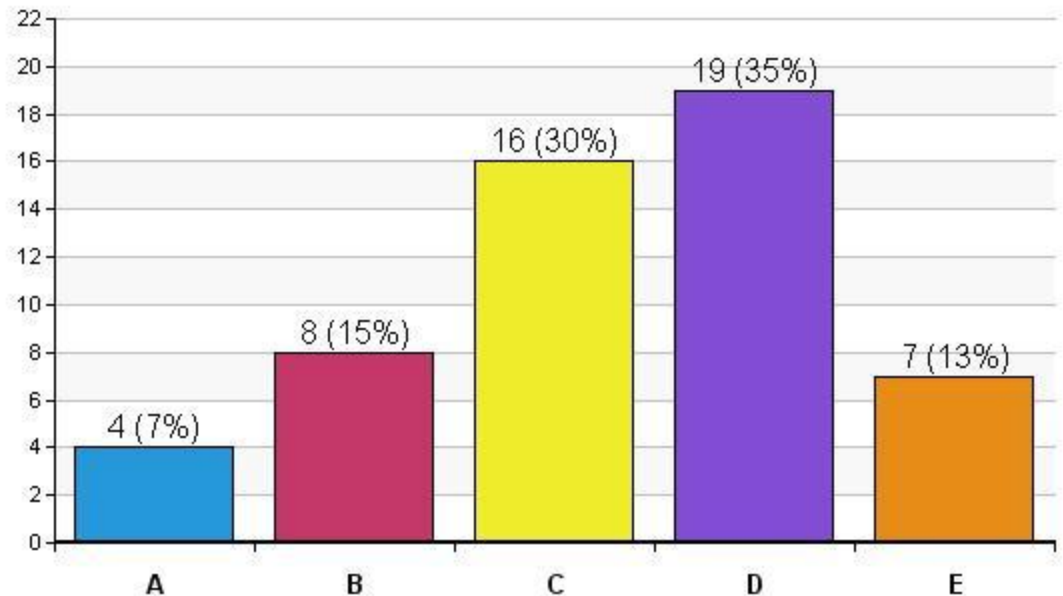


Midwest Boar Stud Managers Conference

- What is the capacity of your stud?
 - A. 1-25
 - B. 26-100
 - C. 101-250
 - D. 251-500
 - E. >500

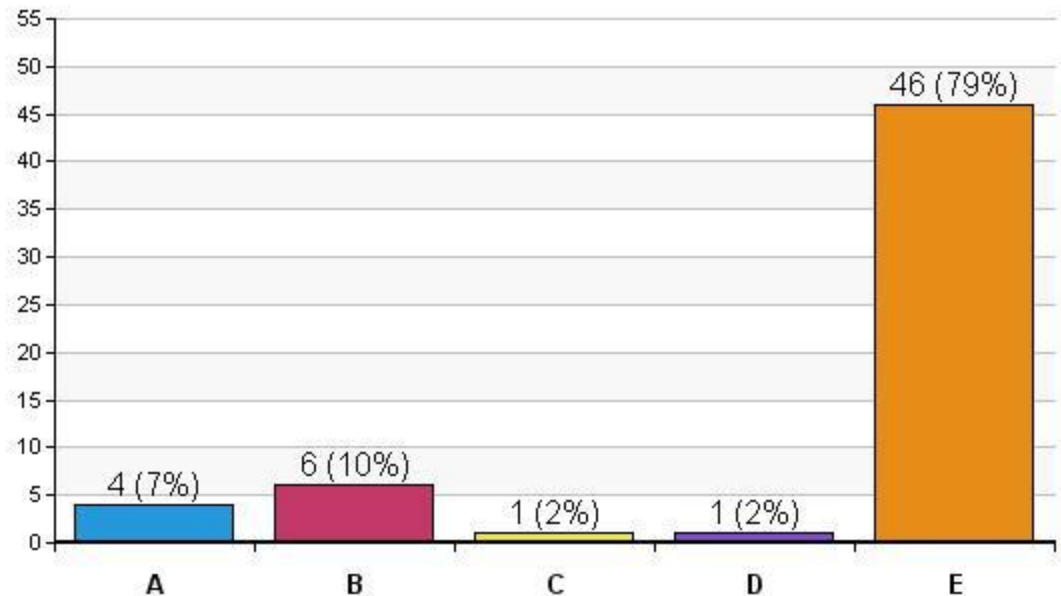


- What is the present inventory?
 - A. 0-25
 - B. 26-100
 - C. 101-250
 - D. 251-500
 - E. >500

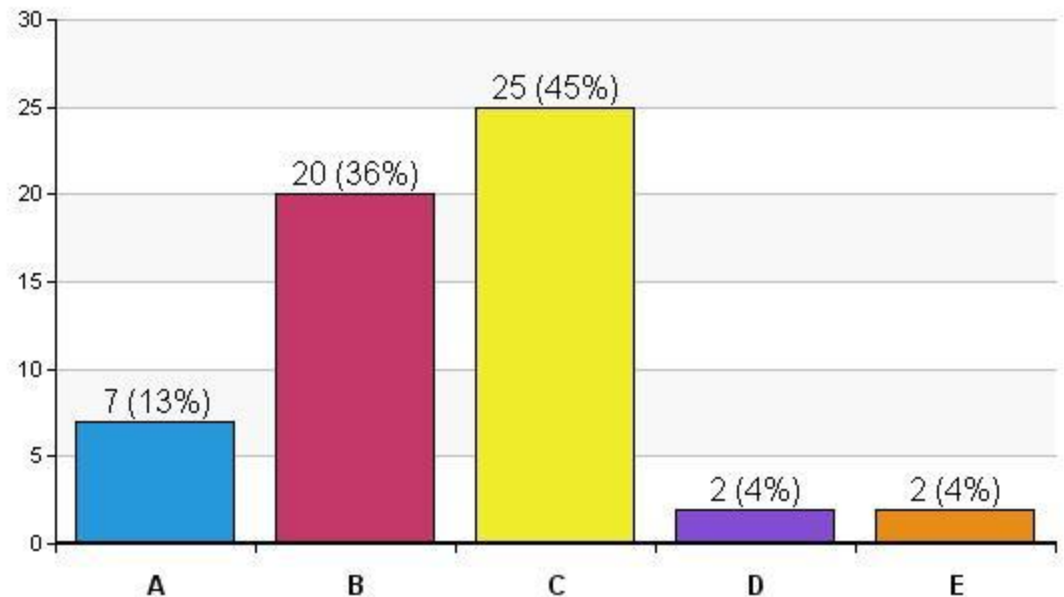


- What percentage of boars are housed in stalls?

- A. 0
- B. 1-25
- C. 26-50
- D. 51-75
- E. 75-100

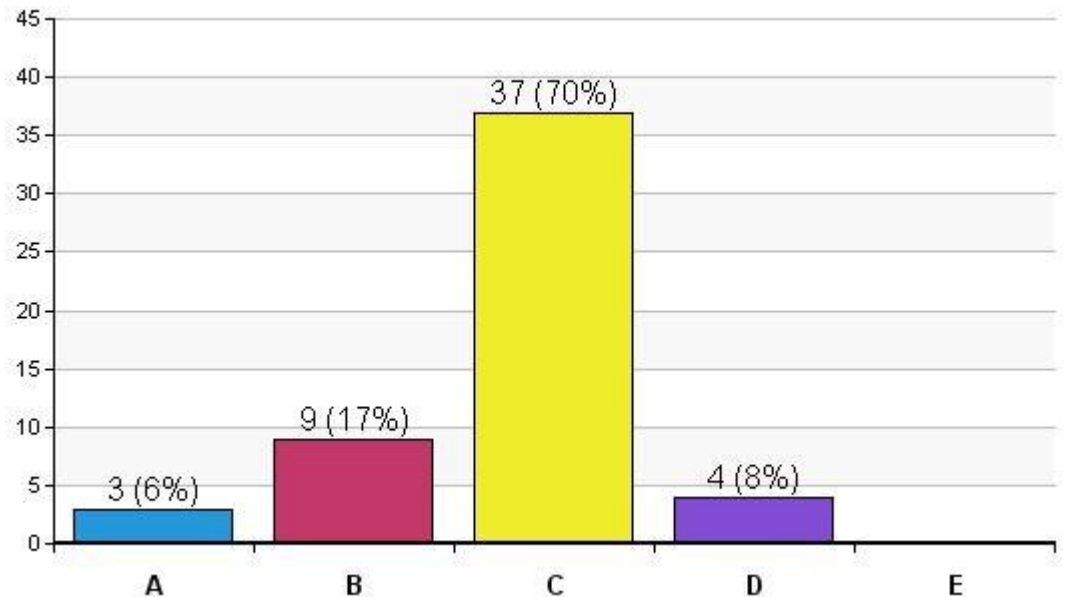


- How many full time people work in the stud (lab and barn combined)?
 - A. 1
 - B. 2-5
 - C. 6-10
 - D. 11-15
 - E. >15

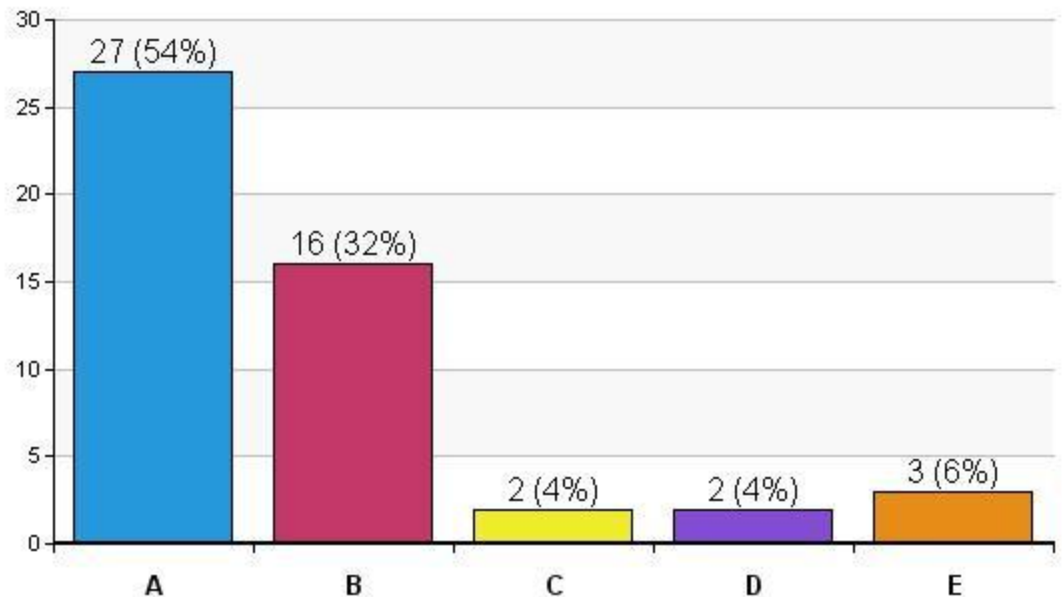


- In a typical month how many doses are produced?

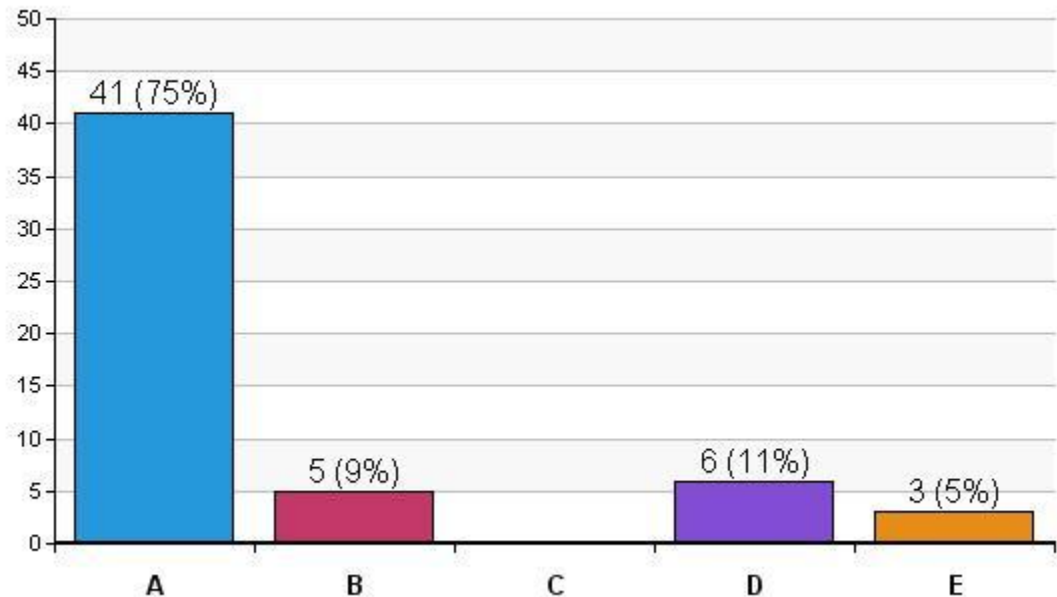
- A. 100-999
- B. 1000-4999
- C. 5,000-49,999
- D. 50,000-124,999
- E. >125,000



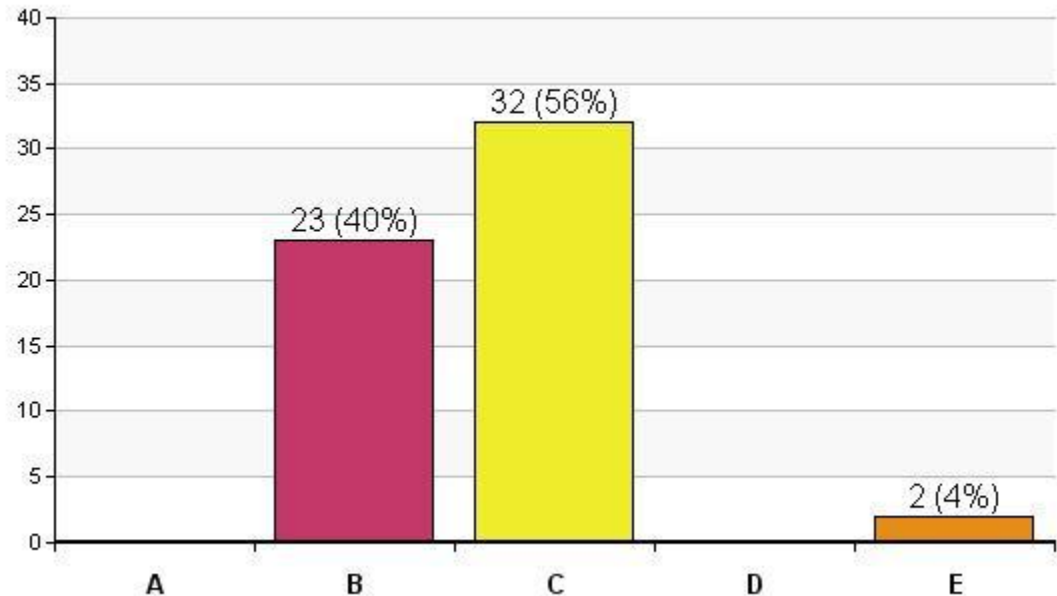
- The stud is best described as:
 - A. in house (stud and sow farms same owner)
 - B. commercial (semen sold to other farms)
 - C. network/coop
 - D. custom collect
 - E. other



- Semen is mostly delivered:
 - A. by internal courier to sow units
 - B. by internal courier to central drop site
 - C. picked up by customer/sow farms
 - D. shipped commercial carrier (UPS, FedEx...)
 - E. other

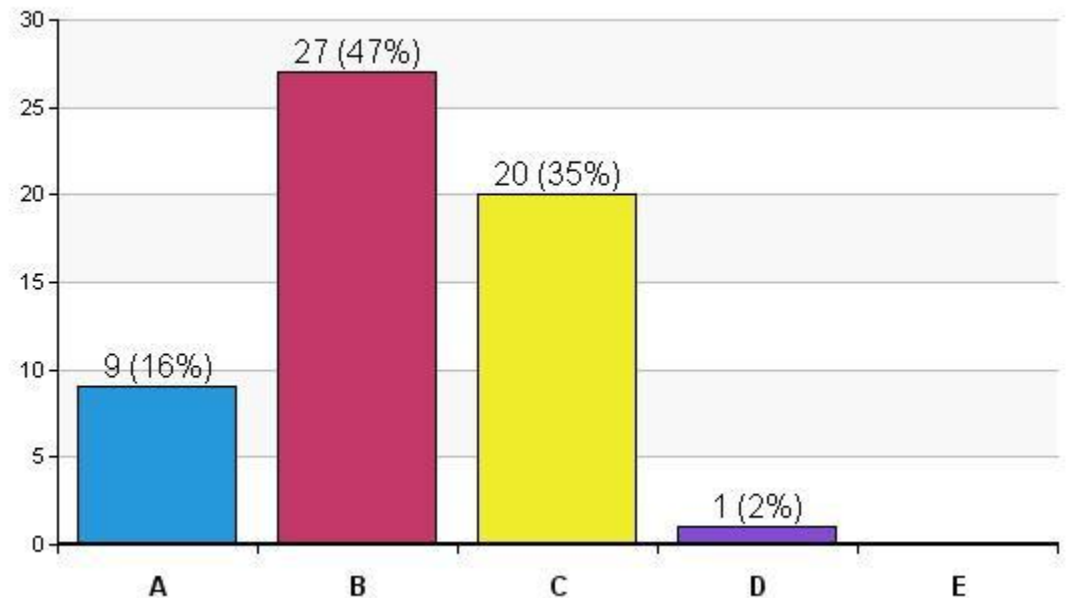


- Primary semen packaging is:
 - A. bottles
 - B. bags/cochettes
 - C. tubes
 - D. bulk
 - E. other



- What percentage of new boars are culled as 'untrainable'?

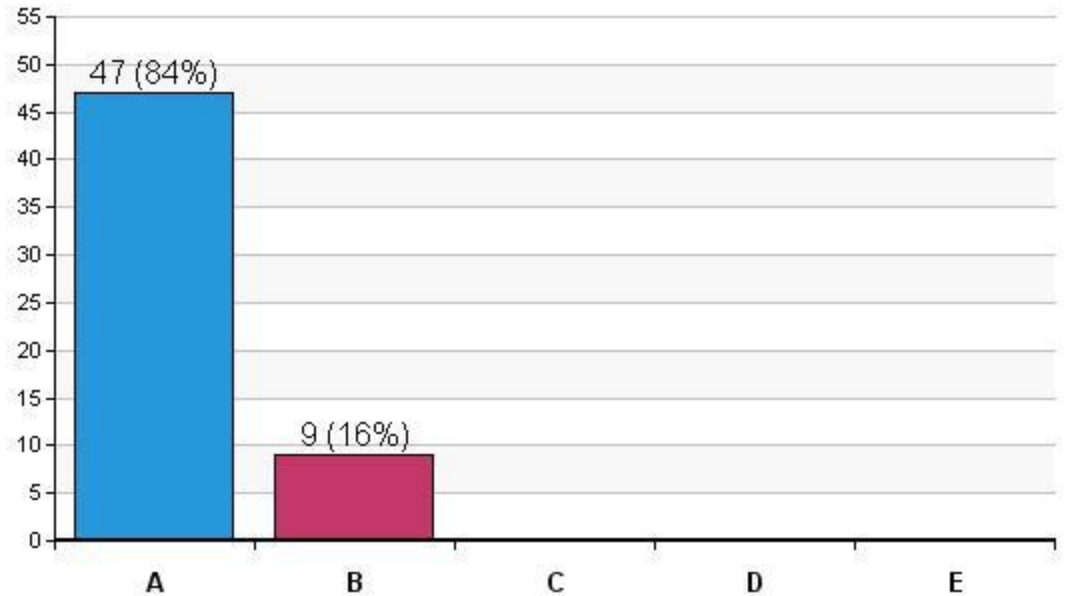
- A. 0
- B. 1-2
- C. 3-5
- D. 6-10
- E. >10



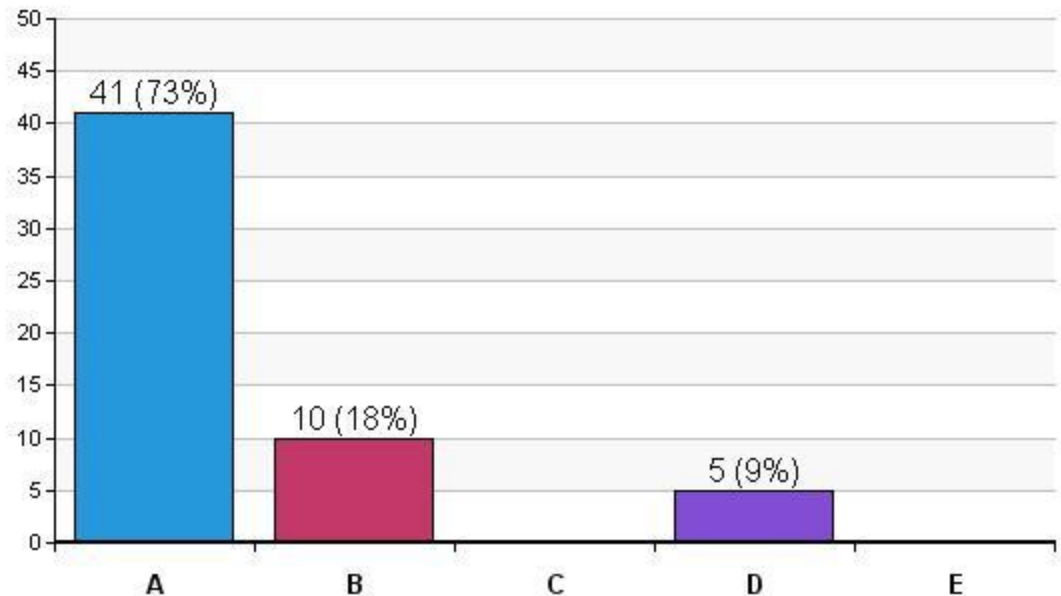
- Is a specialized boar diet fed?

- A. yes

- B. no

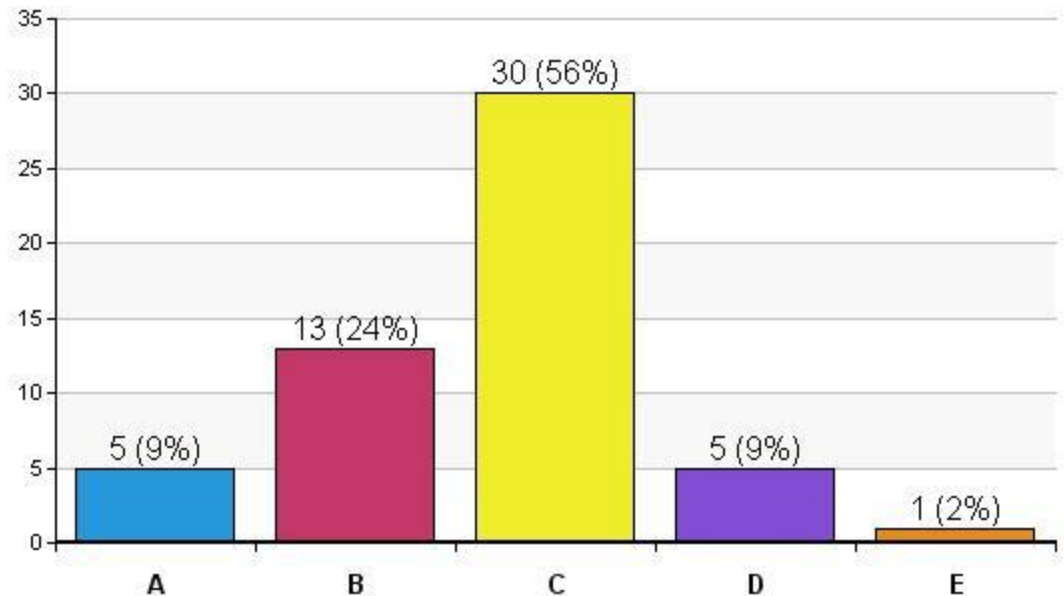


- The stud was:
 - A. built specifically as a stud
 - B. remodeled from another pig barn
 - C. remodeled from some other facility
 - D. some combination of the above

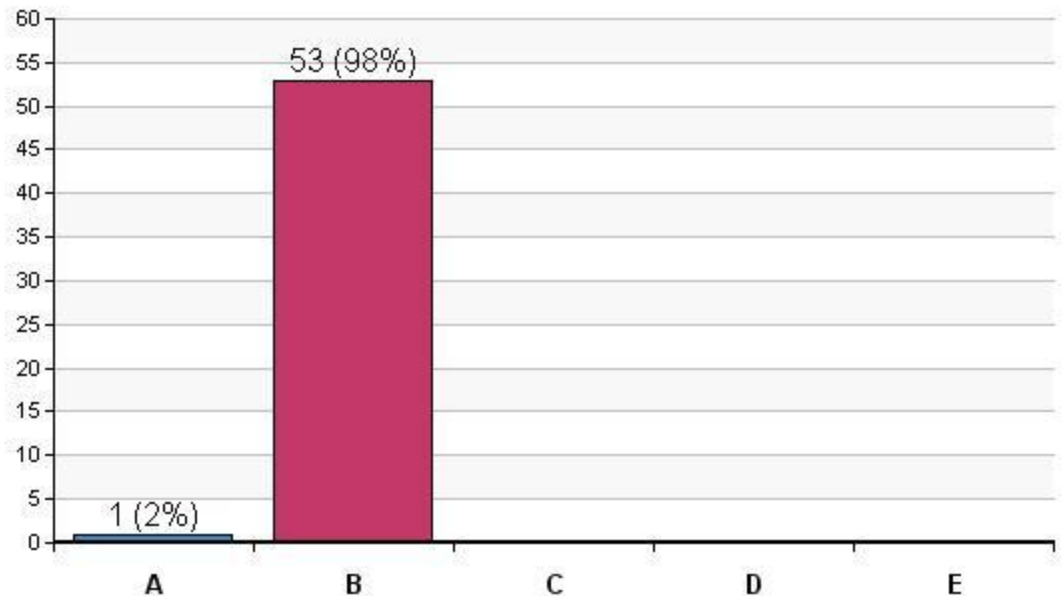


- What percentage of ejaculates are discarded for quality reasons on an annual basis?

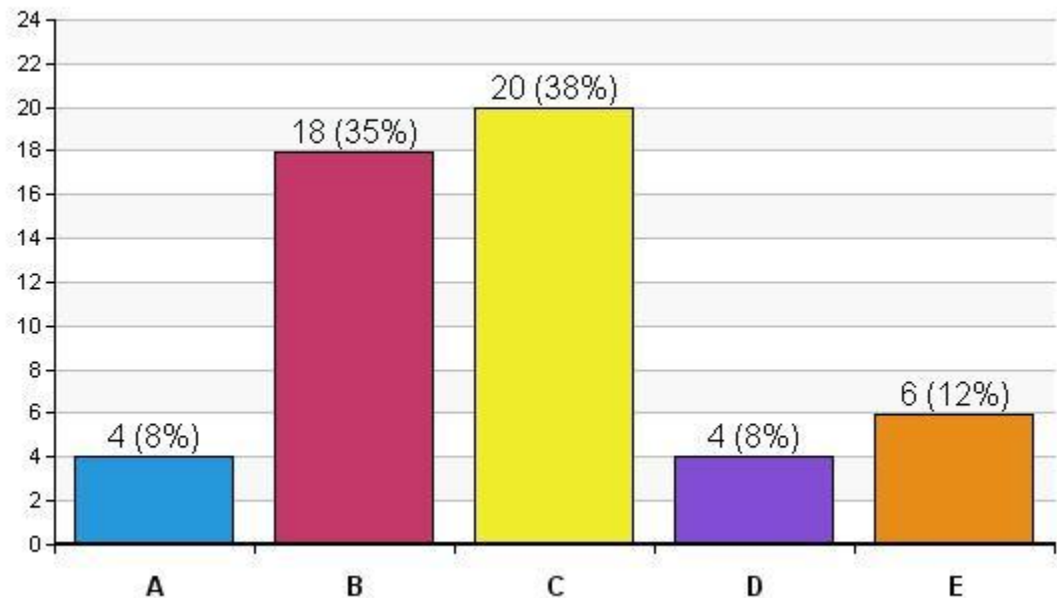
- A. 0-2
- B. 3-5
- C. 6-10
- D. 11-20
- E. >20



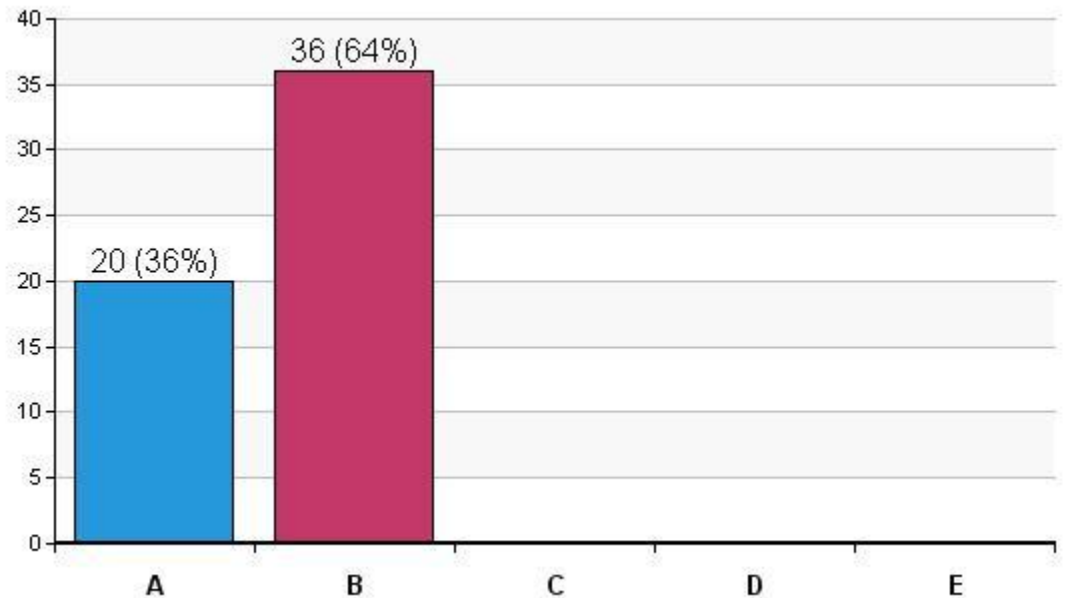
- Do you tell sow units a withdrawal time after mating?
 - A. yes
 - B. no



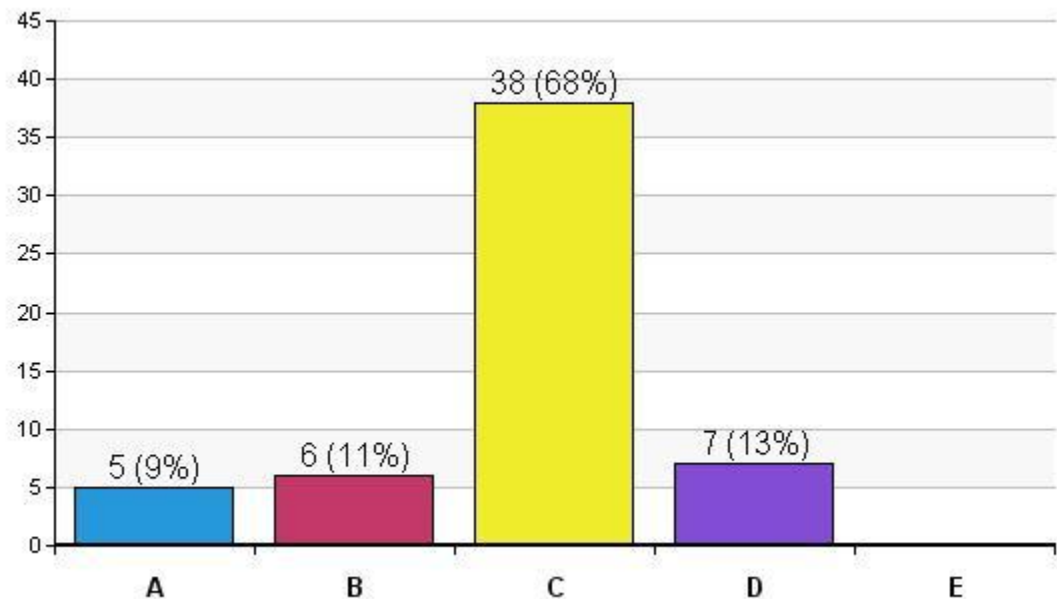
- If you use third party assessment how often?
 - A. never
 - B. weekly
 - C. monthly
 - D. quarterly
 - E. annually



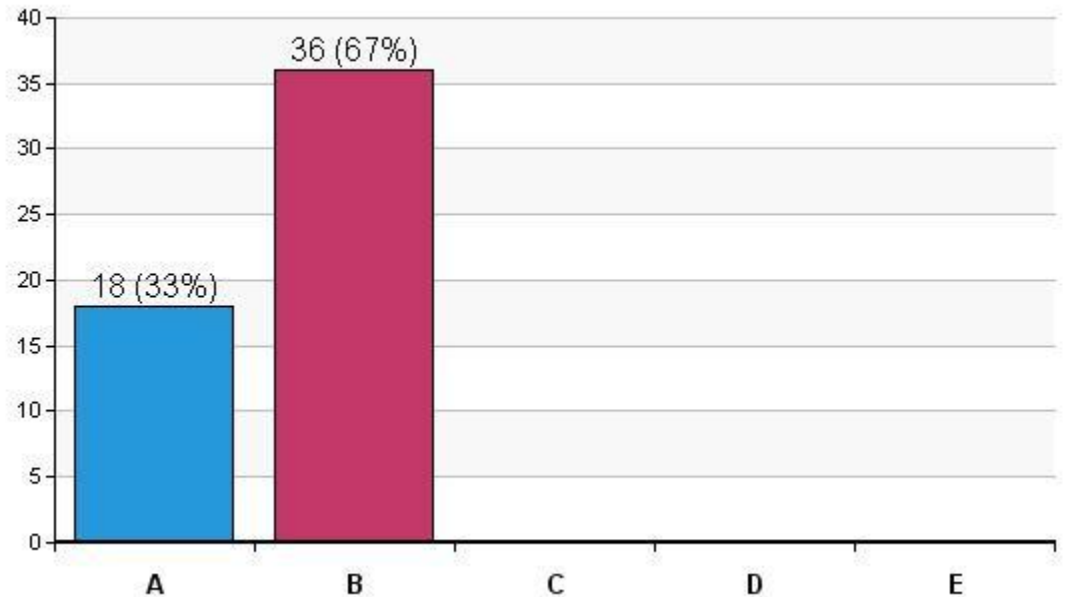
- Does the stud have air filtration?
 - A. yes
 - B. no



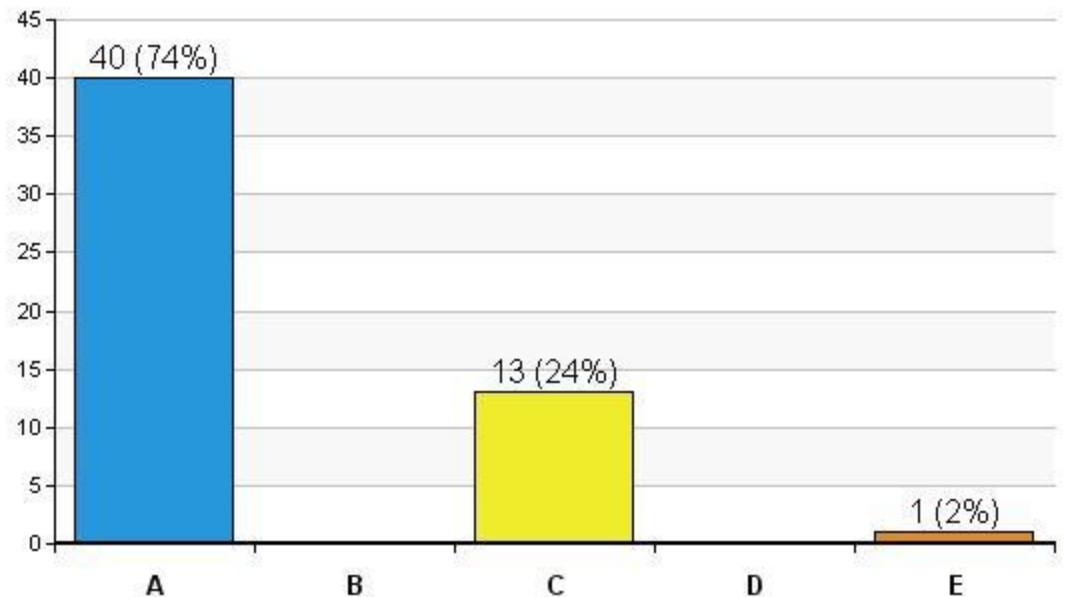
- What is the primary cooling system in the barn?
 - A. fans
 - B. drippers/misters
 - C. cool cells
 - D. air conditioning
 - E. other



- Do you have a four year college degree?
 - A. yes
 - B. no

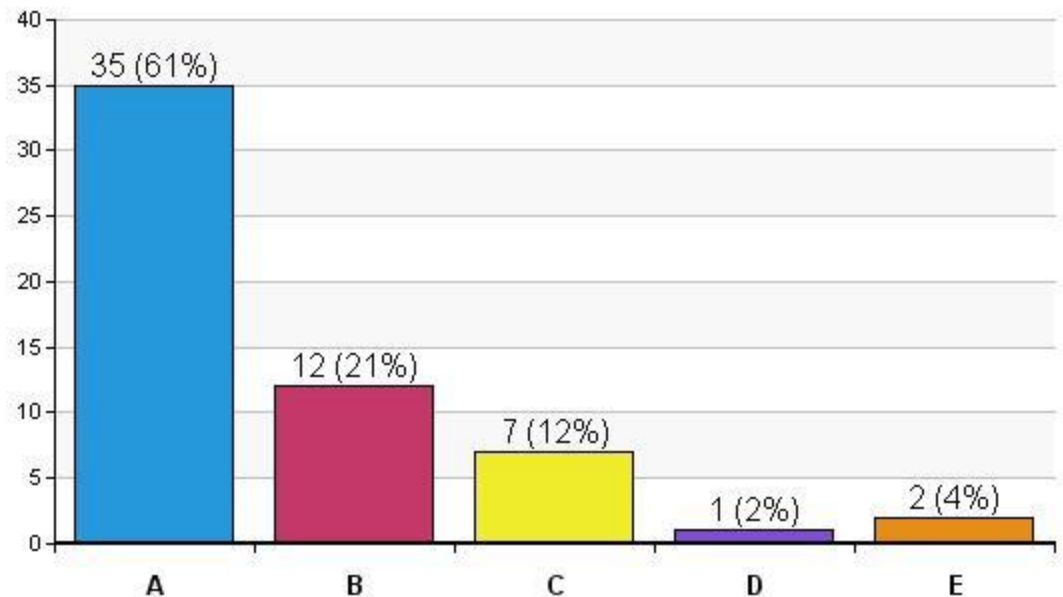


- Do your customers use:
 - A. conventional AI (intra-cervical)
 - B. post-cervical/intrauterine
 - C. both intra-cervical and intra-uterine
 - D. other
 - E. unknown



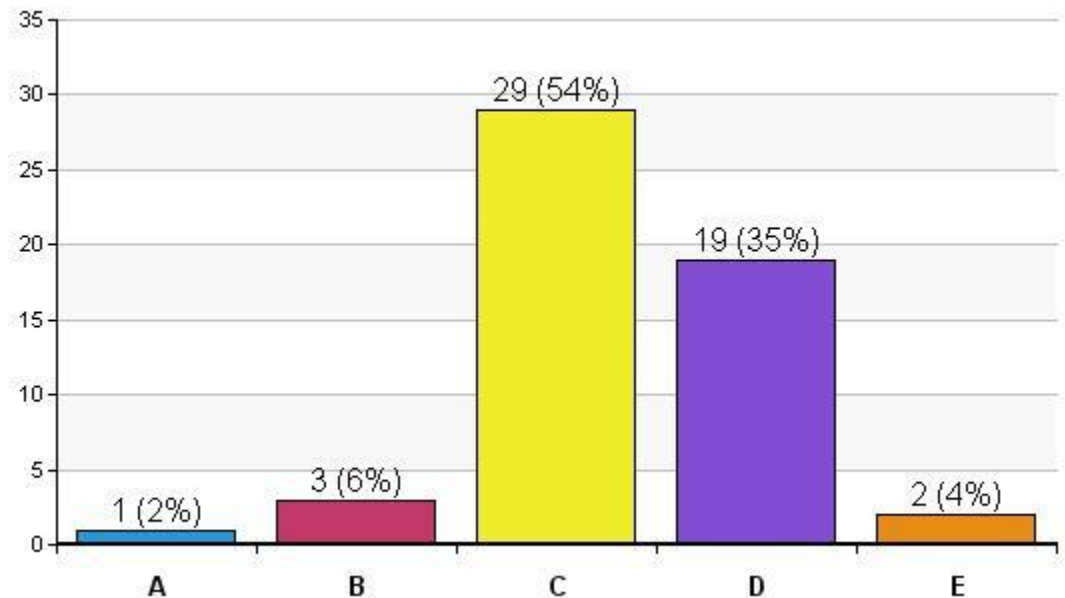
- Boars in the stud come from how many genetic sources?

- A. 1
- B. 2-3
- C. 4-5
- D. 6-10
- E. >10

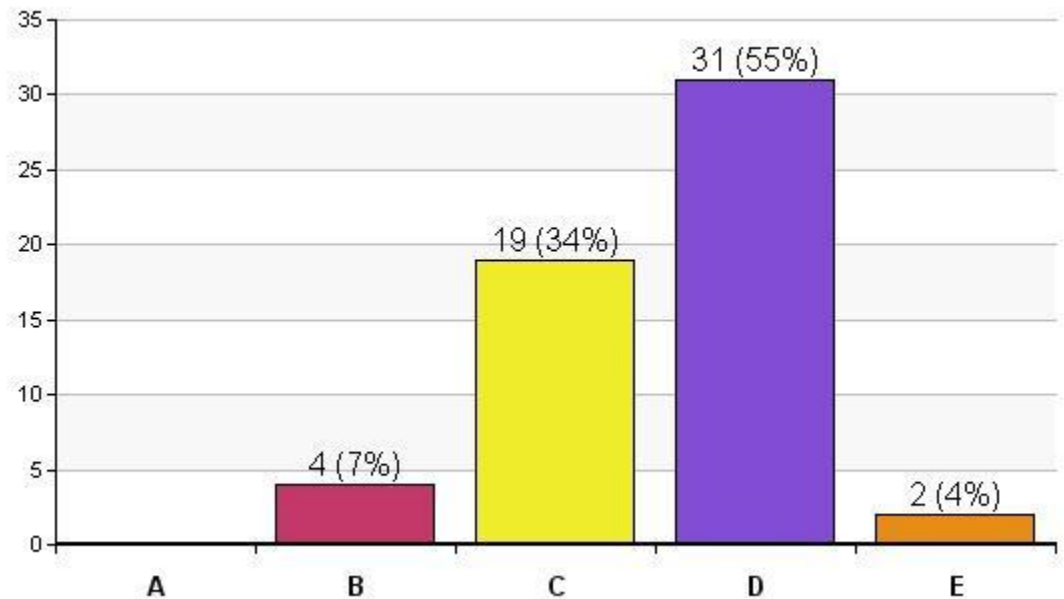


- Minimum % acceptable 'normal morphology' is:

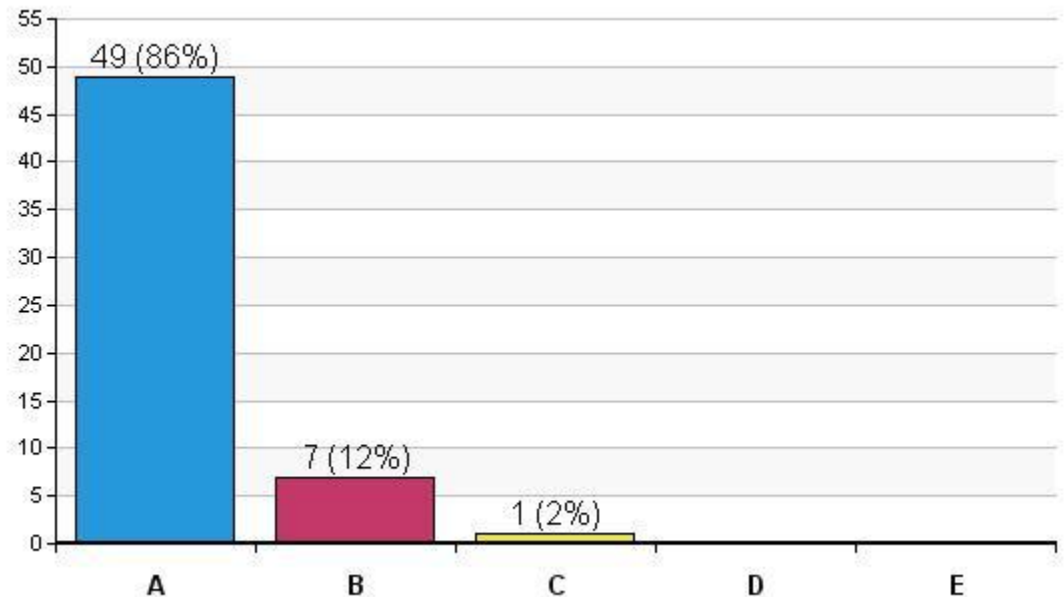
- A. 50-59
- B. 60-69
- C. 70-79
- D. 80-89
- E. >90



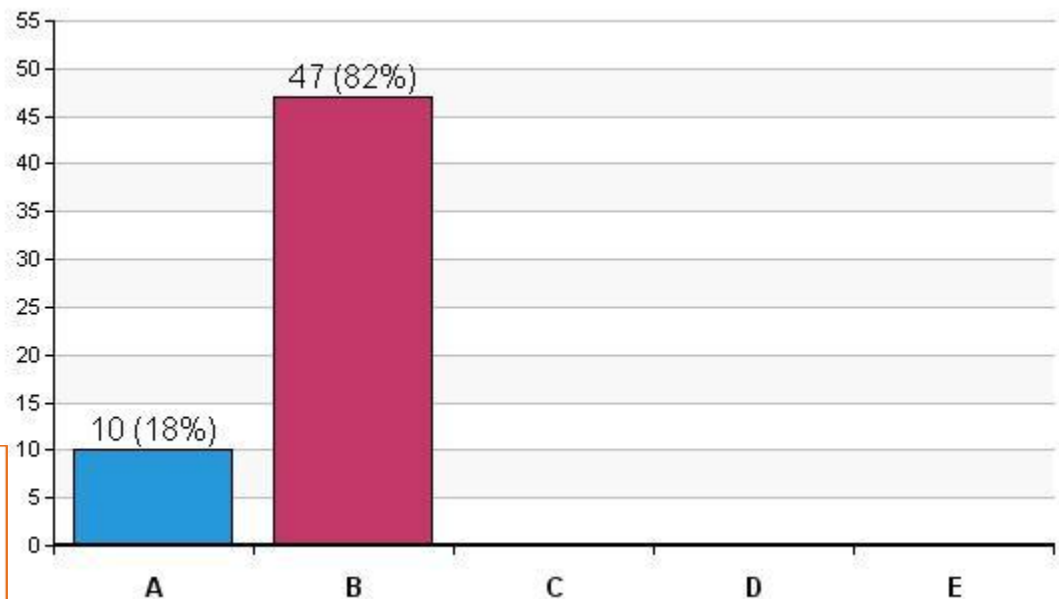
- Minimum % acceptable motility is:
 - A. 50-59
 - B. 60-69
 - C. 70-79
 - D. 80-89
 - E. >90



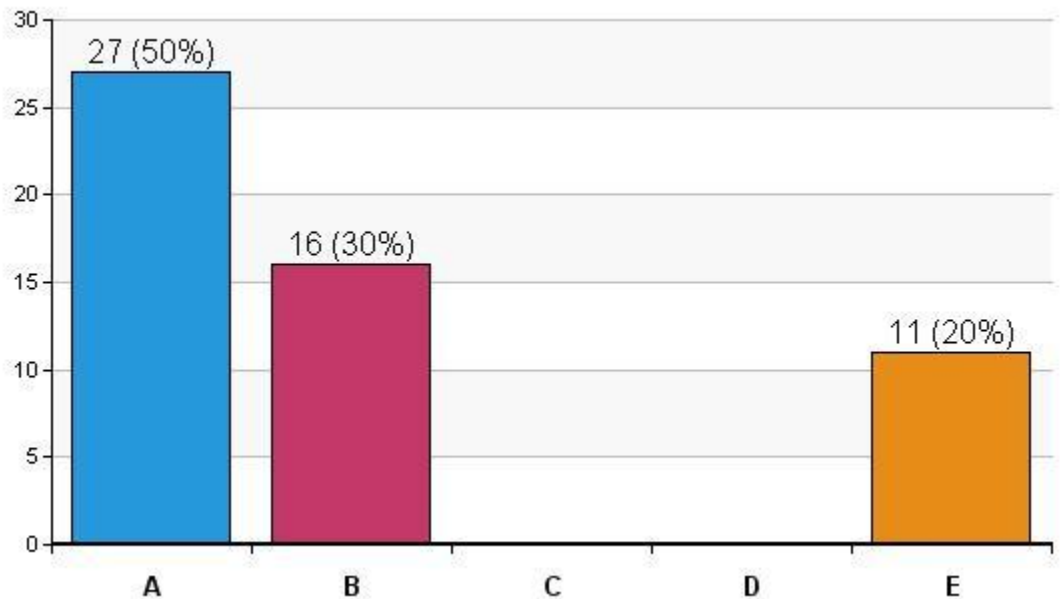
- Was the ‘motility’ you answered in Question 21 ‘total motility’ or ‘progressive motility’?
 - A. total motility
 - B. progressive motility
 - C. other



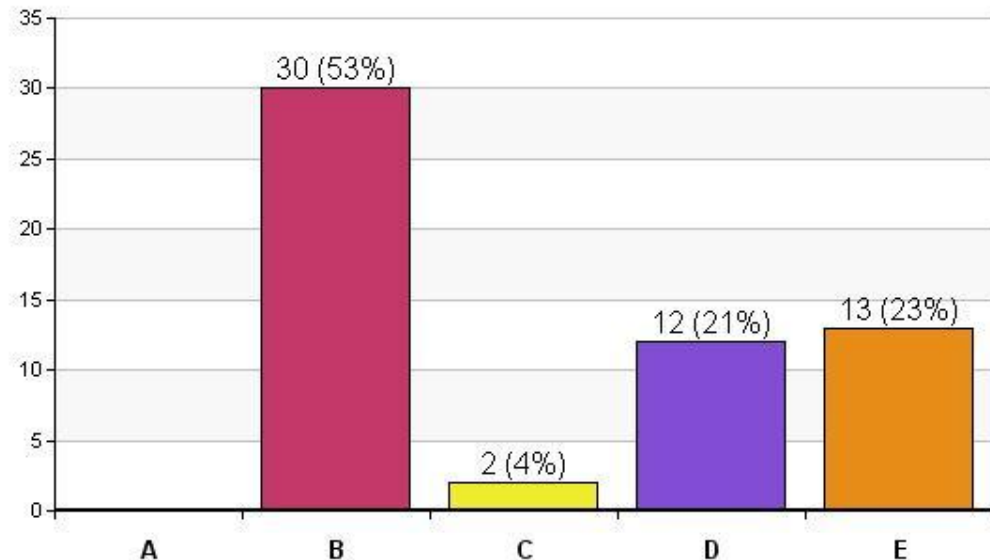
- Does the stud have experience with frozen semen?
 - A. yes
 - B. no



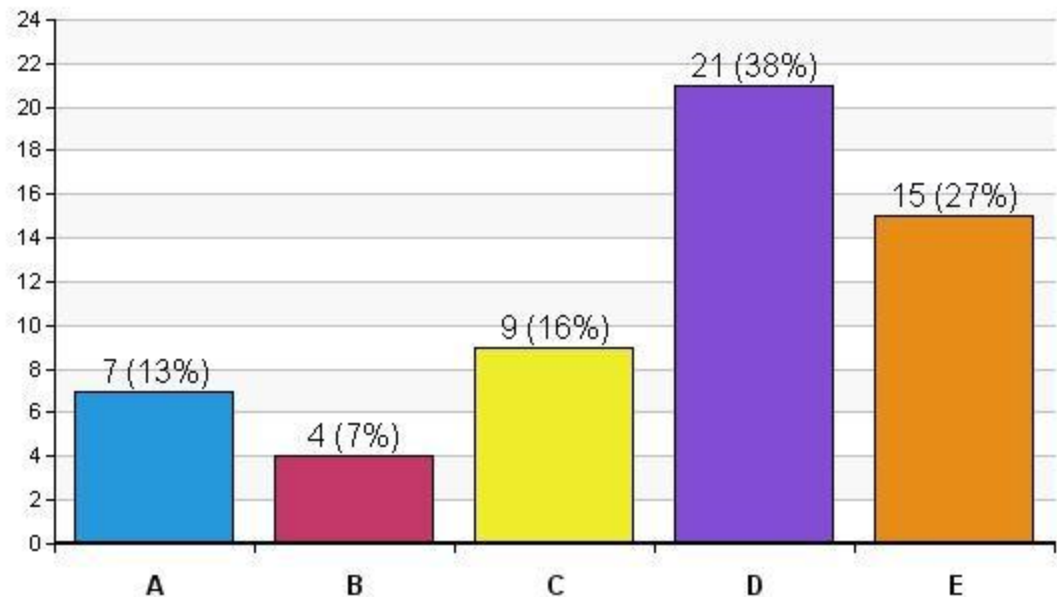
- Semen quality is routinely analyzed using:
 - A. microscope
 - B. CASA
 - C. flow cytometer
 - D. biochemical markers
 - E. a combination of 2 or more of above



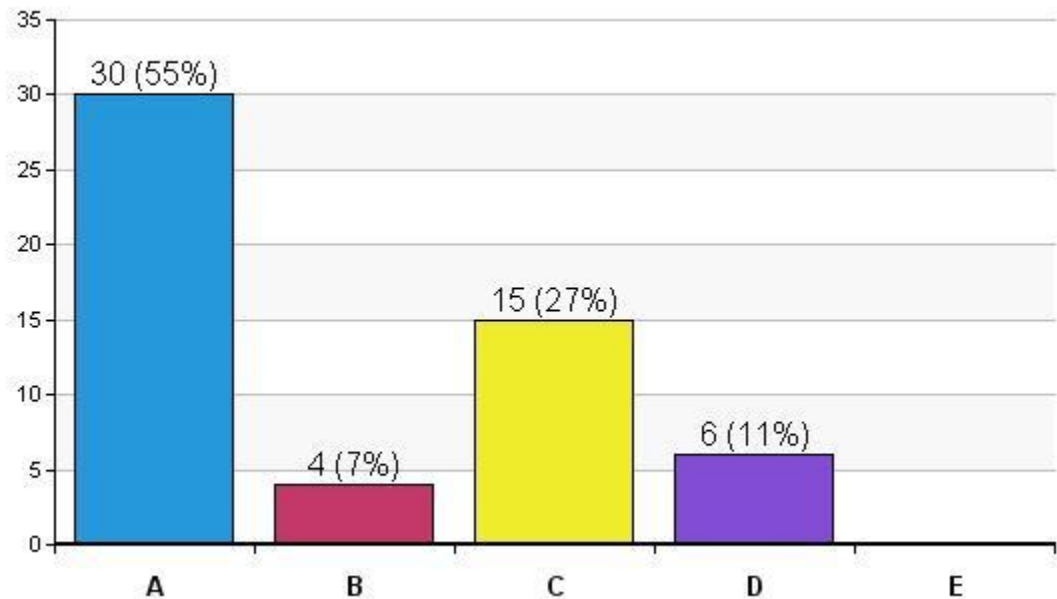
- Semen concentration is routinely analyzed using:
 - A. visually assessed clarity/opaqueness
 - B. spectrophotometer
 - C. microscope
 - D. CASA
 - E. a combination of 2 or more of above



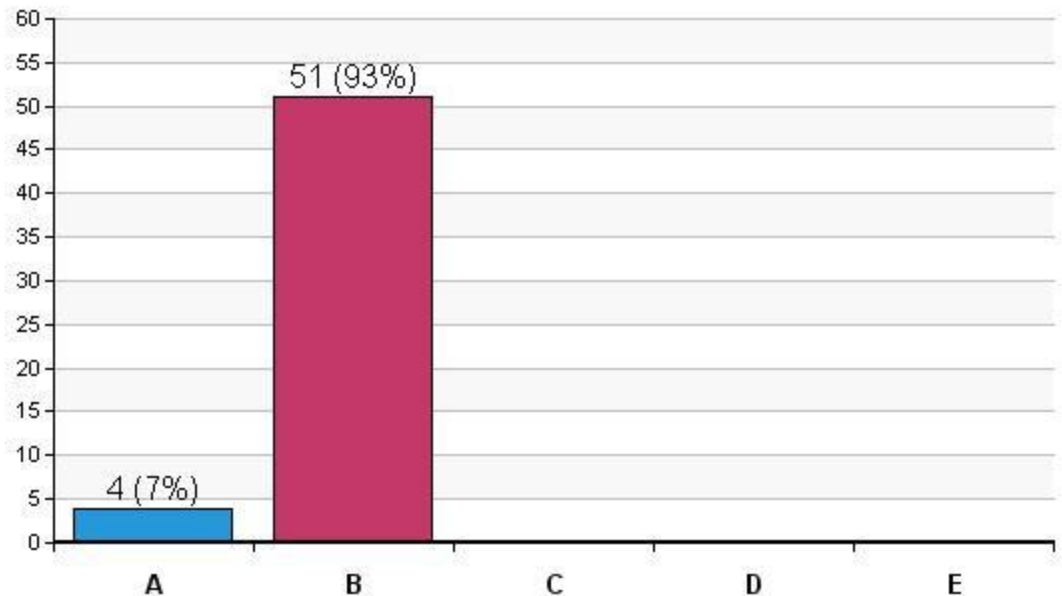
- Annual % boar replacement rate is:
 - A. 10-25
 - B. 26-35
 - C. 36-50
 - D. 51-75
 - E. >76



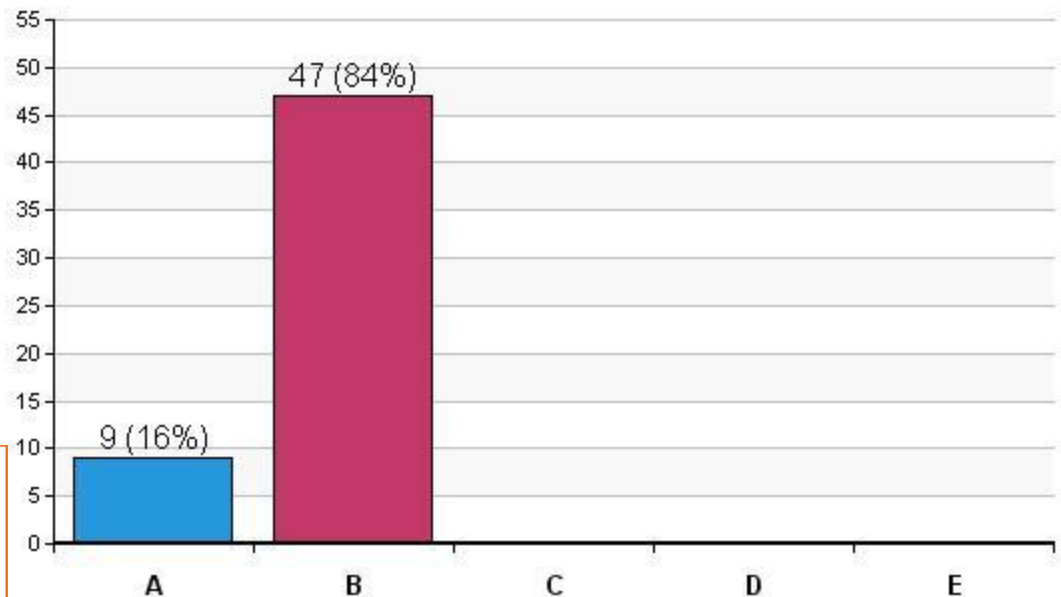
- Primary reason boars are culled:
 - A. genetic improvement
 - B. sperm production
 - C. semen quality
 - D. lameness/health
 - E. other



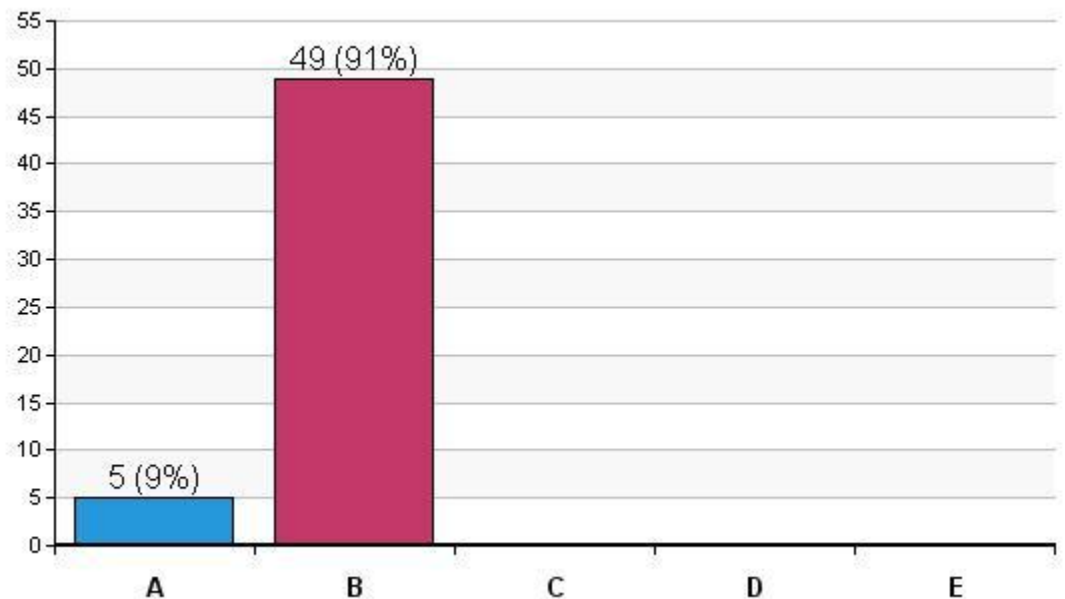
- In the past three years the stud has tested positive for PRRS.
 - A. yes
 - B. no



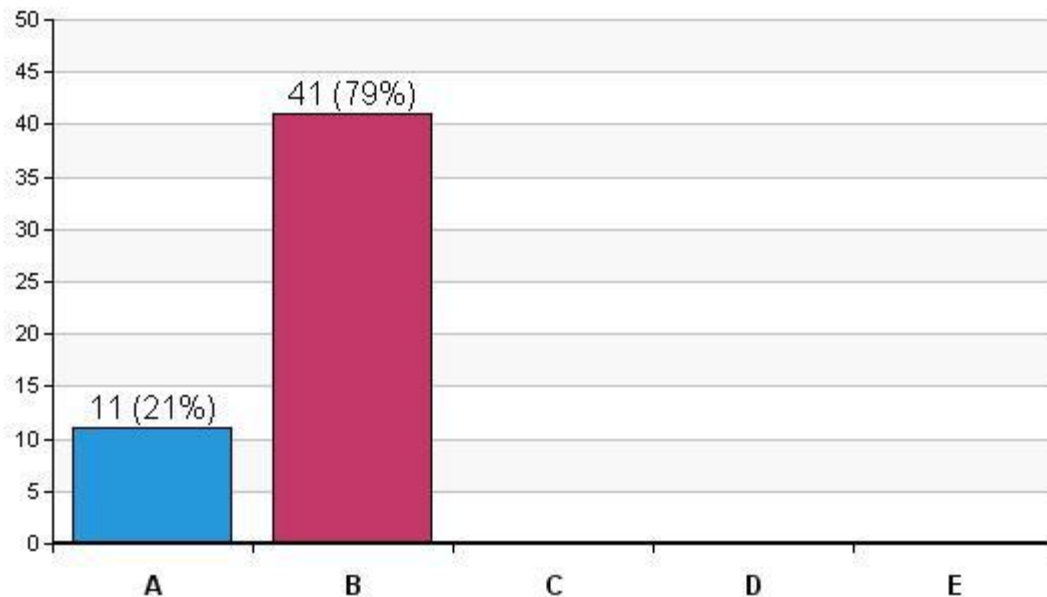
- In the past three years the stud has tested positive for flu.
 - A. yes
 - B. no



- I attended the first Boar Stud Managers Conference in West Lafayette, IN in 2000.
 - A. yes
 - B. no

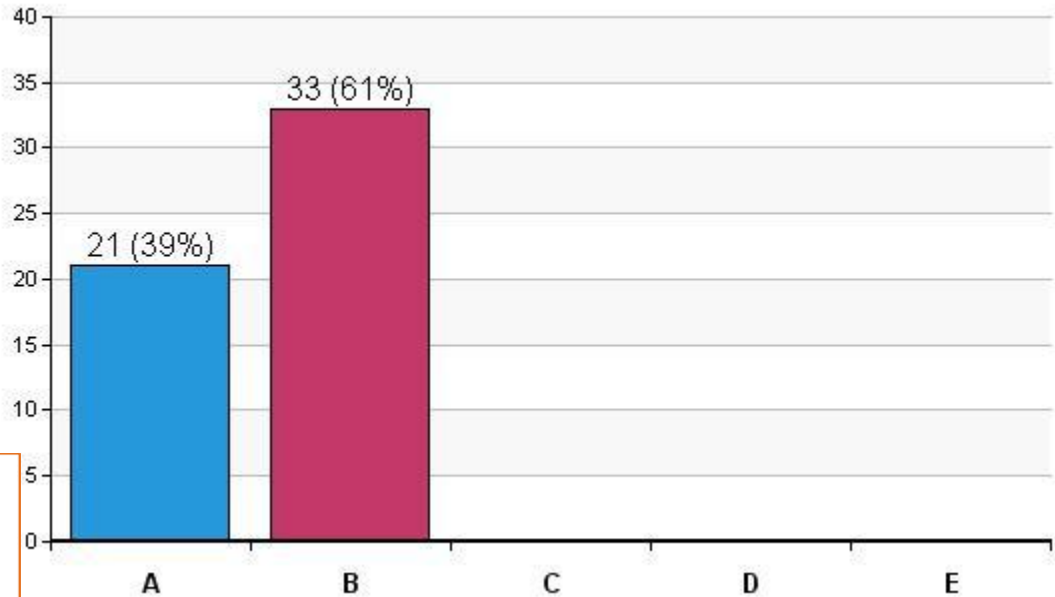


- I attended the second Boar Stud Managers Conference in St. Louis in 2004.
 - A. yes
 - B. no



- I attended the third Boar Stud Managers Conference in St. Louis in 2008.

- A. yes
- B. no

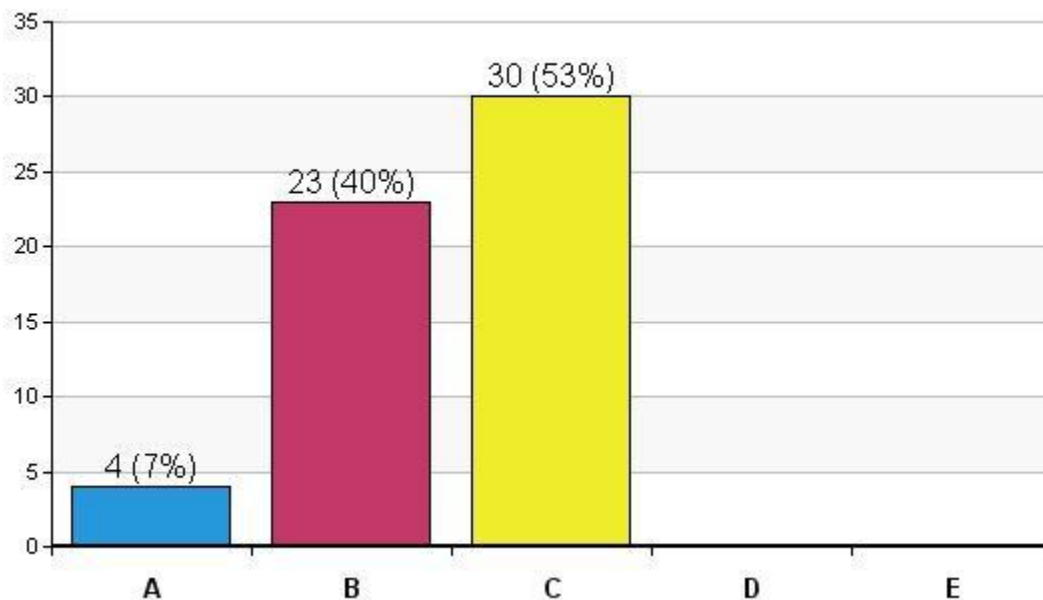


- I attended all three previous Boar Stud Managers Conferences.

- A. yes

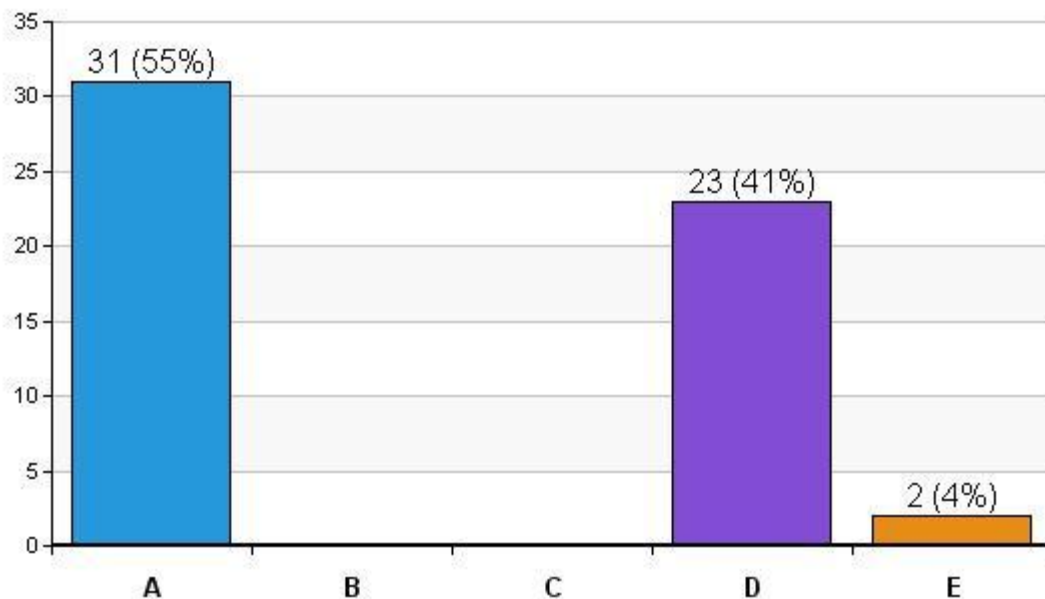
- B. no

- C. no, this is my first one

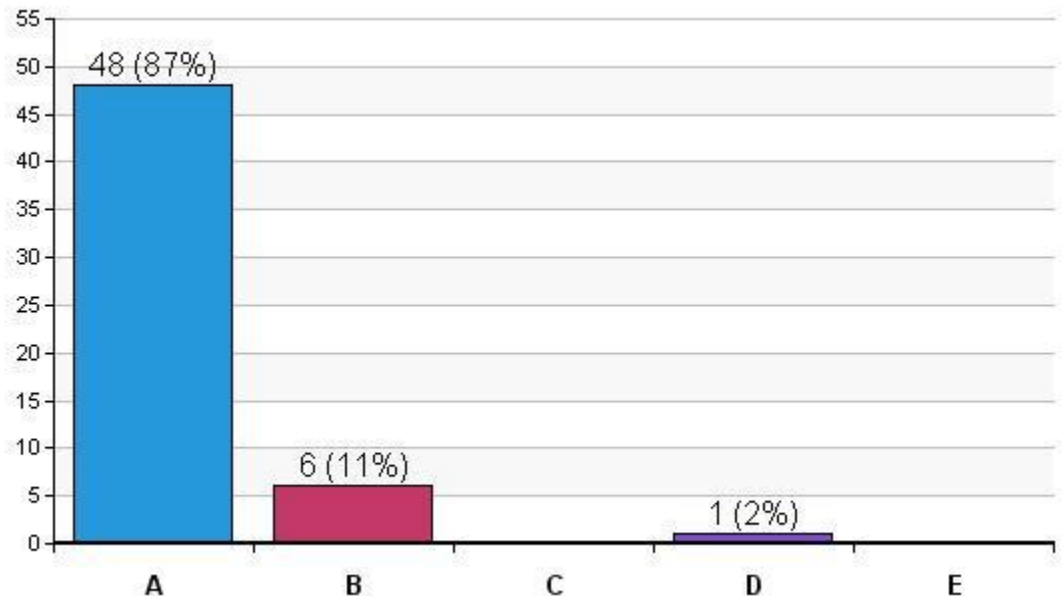


- I arrived in Saint Louis by:

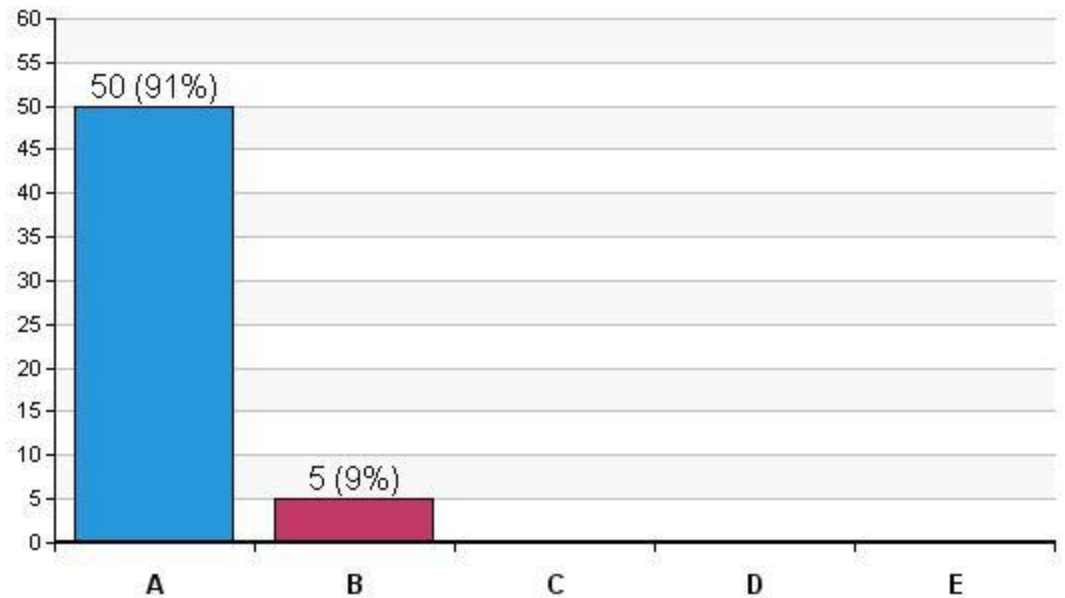
- A. car
- B. bus
- C. train
- D. plane
- E. other



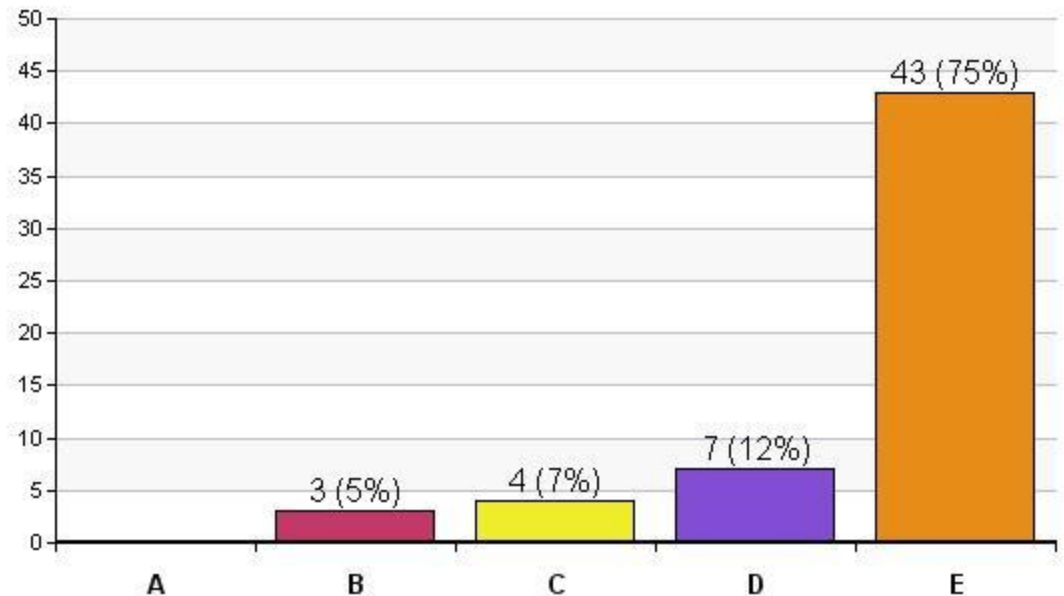
- I currently live in:
 - A. United States
 - B. Canada
 - C. Mexico
 - D. South America
 - E. Europe



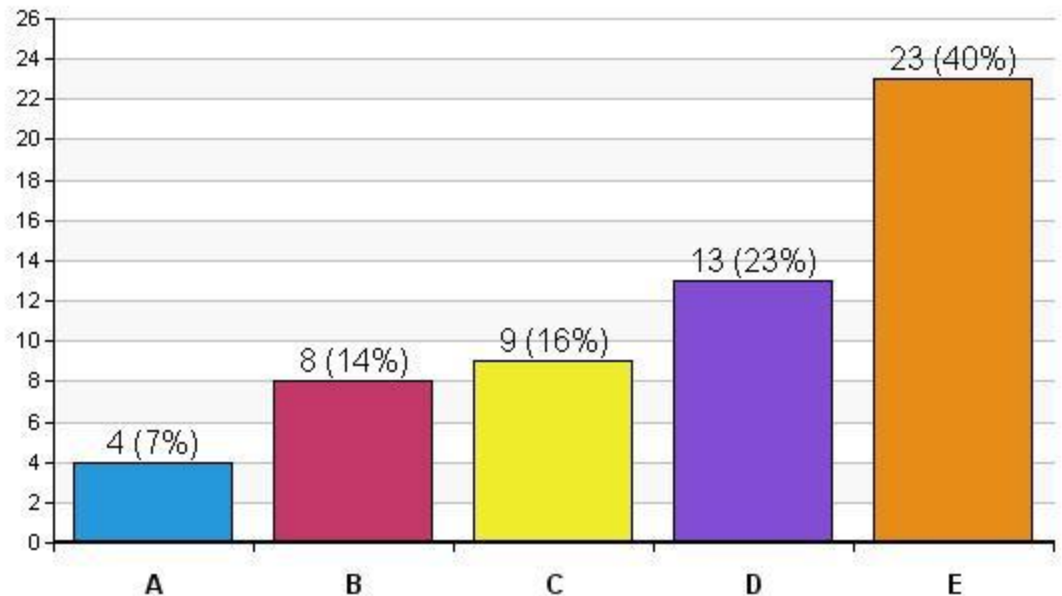
- I _____ seen natural mating in pigs
 - A. have
 - B. have not



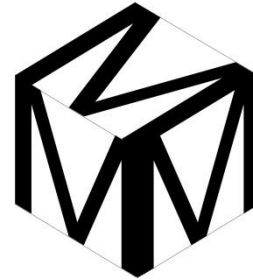
- I have worked with pigs for _____ years.
 - A. <1
 - B. 1-3
 - C. 4-6
 - D. 7-12
 - E. >12



- I have worked in boar studs for _____ years.
 - A. <1
 - B. 1-3
 - C. 4-6
 - D. 7-12
 - E. >12



Thank you to our sponsors



Division of Animal Sciences
College of Agriculture, Food and Natural Resources

UNIVERSITY OF

ILLINOIS

AT URBANA-CHAMPAIGN